

# AIRPORT DIAGRAM

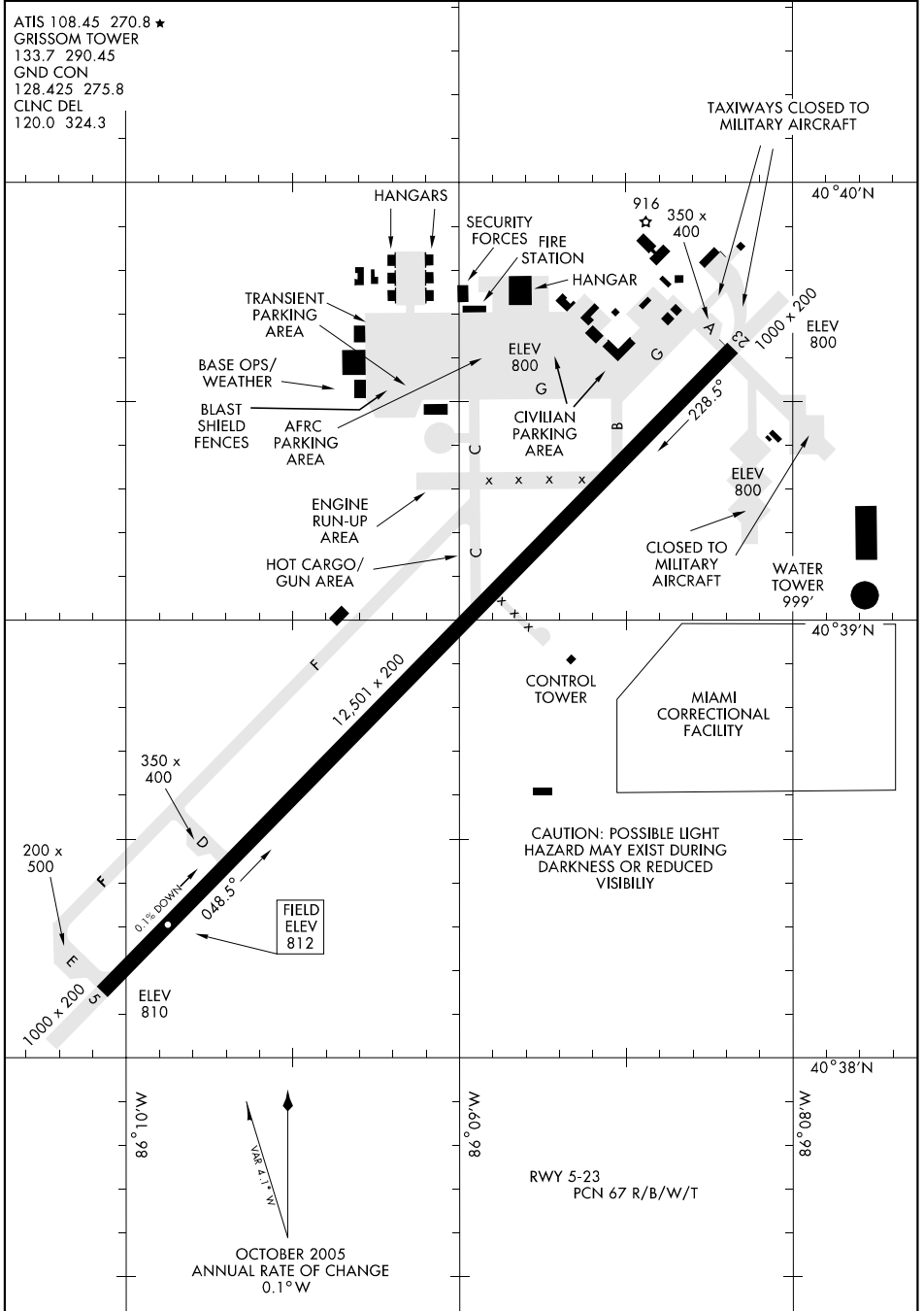
AFD-470 [USAF]

GRISSOM ARB (KGUS)

PERU, INDIANA

ATIS 108.45 270.8 ★  
 GRISSOM TOWER  
 133.7 290.45  
 GND CON  
 128.425 275.8  
 CLNC DEL  
 120.0 324.3

TAXIWAYS CLOSED TO MILITARY AIRCRAFT



EC-2, 27 OCT 2005 to 24 NOV 2005

EC-2, 27 OCT 2005 to 24 NOV 2005

# AIRPORT DIAGRAM

PERU, INDIANA  
GRISSOM ARB (KGUS)